

MULBERRY KNOLL ROAD **EXTENSION**

PLANNING AND ENVIRONMENTAL LINKAGES STUDY



VIRTUAL PUBLIC WORKSHOP

October 26, 2021 4:00 PM

Prepared By:



Whitman, Requardt & Associates, LLP

Engineers · Architects · Environmental Planners

Est. 1915

MEETING AGENDA

- Purpose of Workshop
- Project Overview
 - What is a Planning and Environmental Linkages (PEL) Study?
 - Project Location
 - What is a Transportation Improvement District (TID)?
- PEL Study
 - Purpose and Need
 - Environmental Inventory
 - Screening Criteria
 - Typical Section
 - Initial Concepts
 - Comparison of Initial Concepts
- Next Steps

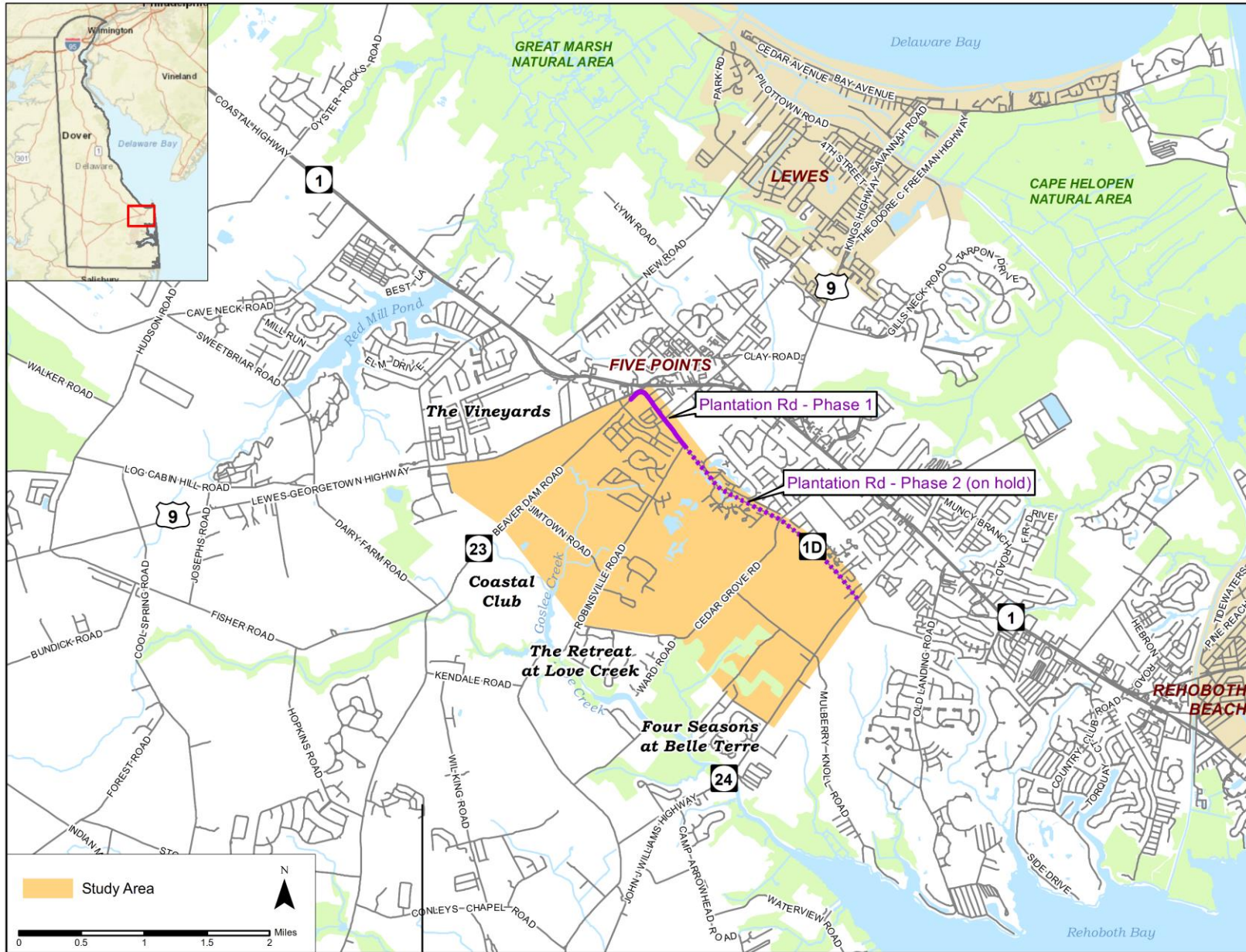
PURPOSE OF WORKSHOP

- Discuss the need for the study
- Show proposed study area
- Share initial concepts
- Obtain comments and feedback on the concepts at the close of the presentation via the Q&A box

WHAT IS A PEL STUDY?

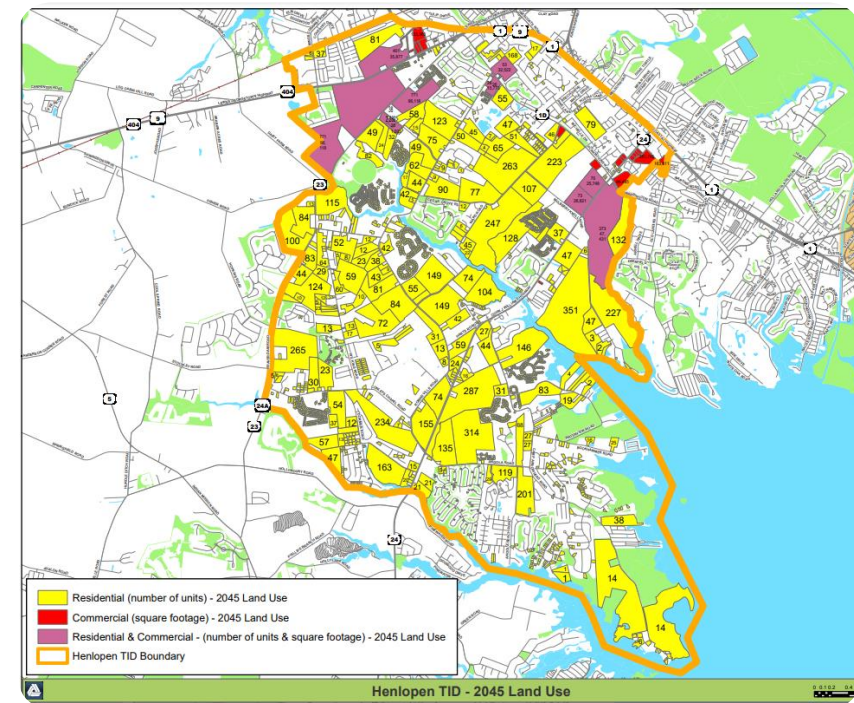
- **Planning and Environmental Linkages (PEL) Studies**
 - Collaborative early transportation planning, considering potential impacts and benefits of potential future transportation improvements.
 - Information developed can be integrated into the environmental review process as future funding is potentially identified.
- **Goals of the Mulberry Knoll Extension PEL Study**
 - To establish a long-term vision for future improvements west of SR 1, between US 9 and SR 24;
 - To identify and preserve a defined corridor for future project implementation; and
 - To inform regional development transportation priorities in advance of any funding becoming identified for detailed design and construction.

PROJECT LOCATION

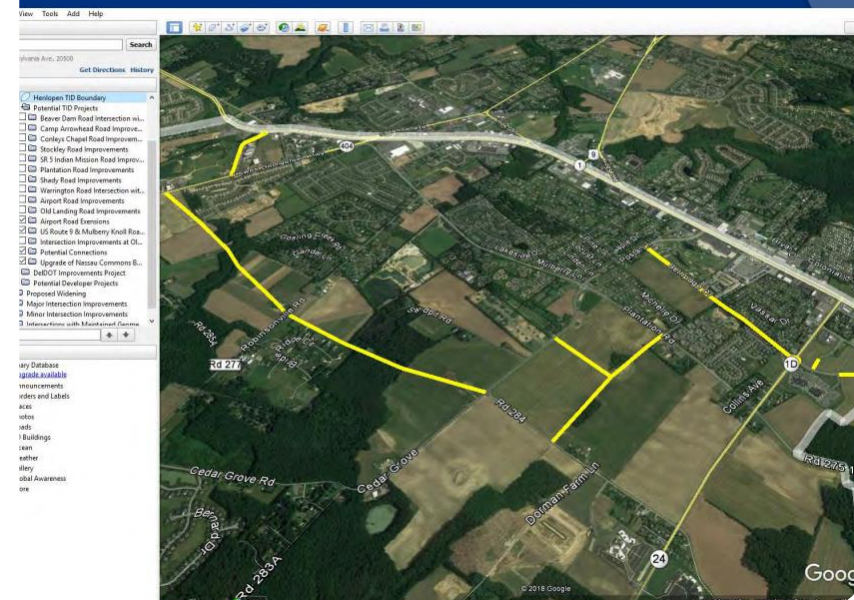


WHAT IS A TID?

- Transportation Improvement District (TID)
 - Apply to a specific geographic area needing transportation improvements
 - Transportation-based impact fees equitably distributed to developers
- Henlopen TID
 - Identified Potential Future Land Use
 - Projected Future Traffic LOS
 - Recommendations – included a new connection between Cedar Grove Road and US 9, in the vicinity of Mulberry Knoll Road



Recommendations – New Connectors



PURPOSE AND NEED

- The purpose of the Mulberry Knoll Road Extension Planning and Environmental Linkages (PEL) Study is to identify transportation improvements that:

Reduce Congestion

For local and regional traffic and increase system linkages



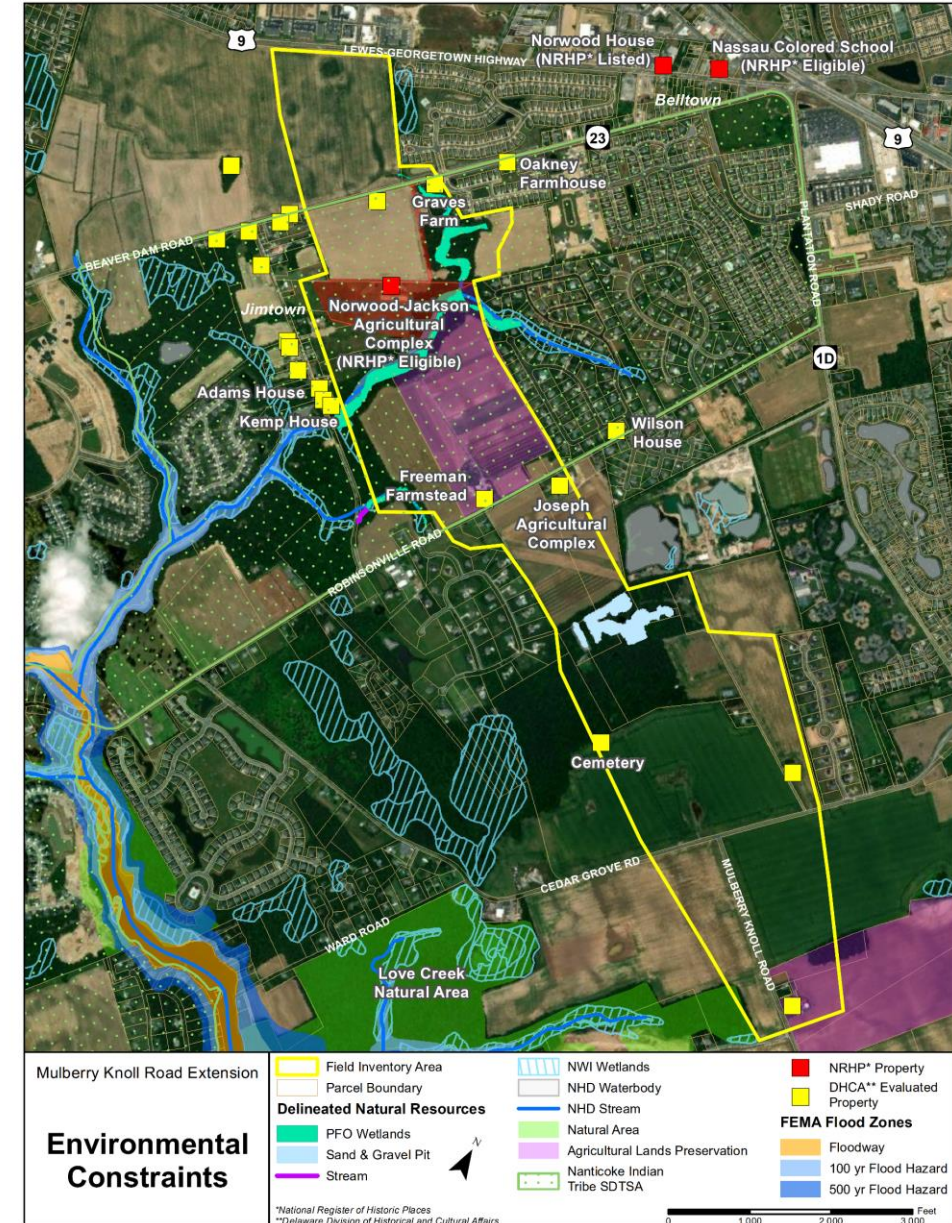
Improve Access

For designated development areas to support economic vitality and sustained growth

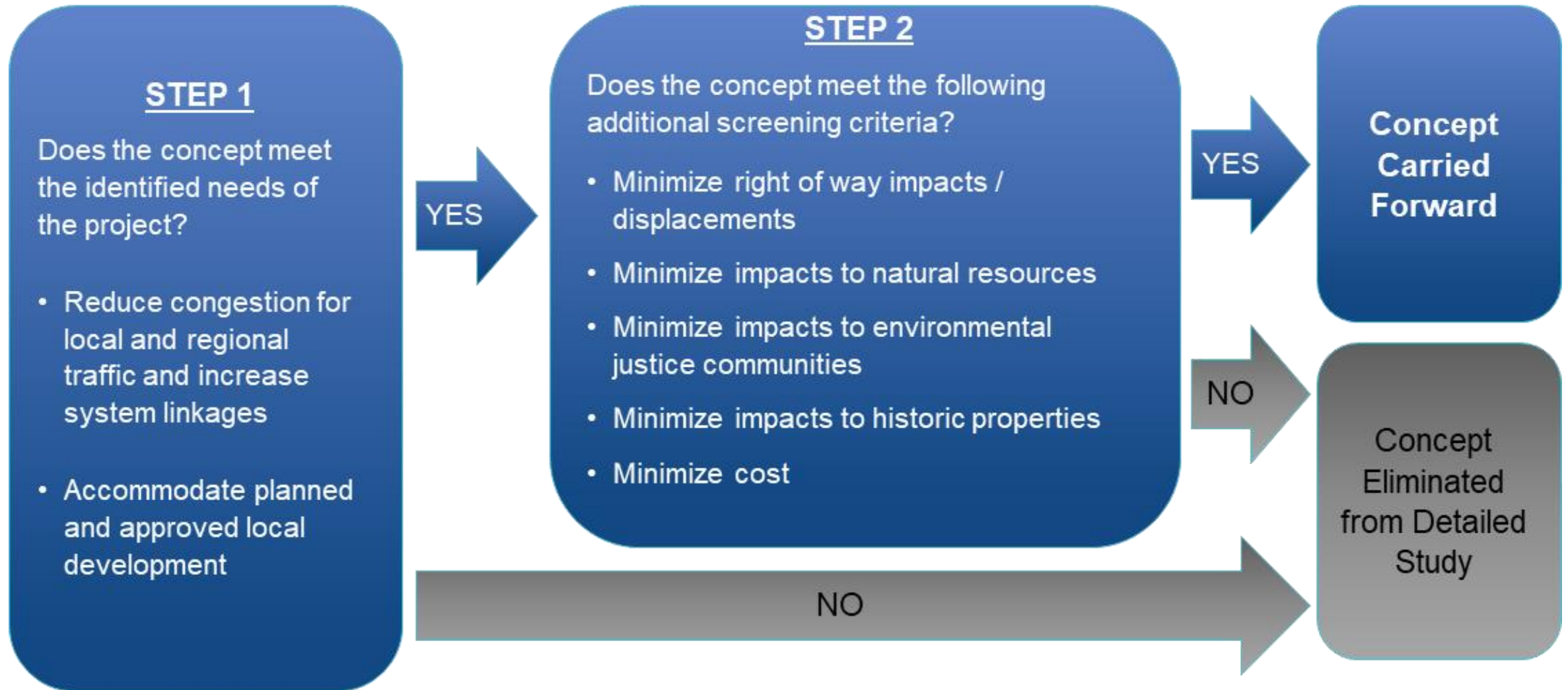


ENVIRONMENTAL INVENTORY

- Inventory area established as an overall corridor where a future connection could likely be implemented
- Resources identified include:
 - Wetlands, streams, and flood zones
 - Natural Areas
 - Agricultural Lands Preservation Program
 - Historic properties
 - Environmental Justice (EJ) communities

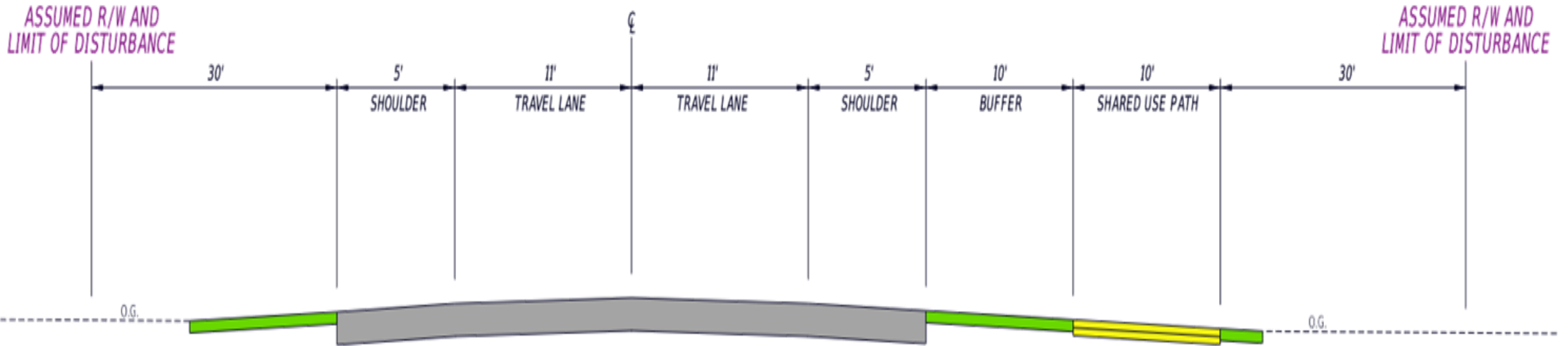


SCREENING CRITERIA

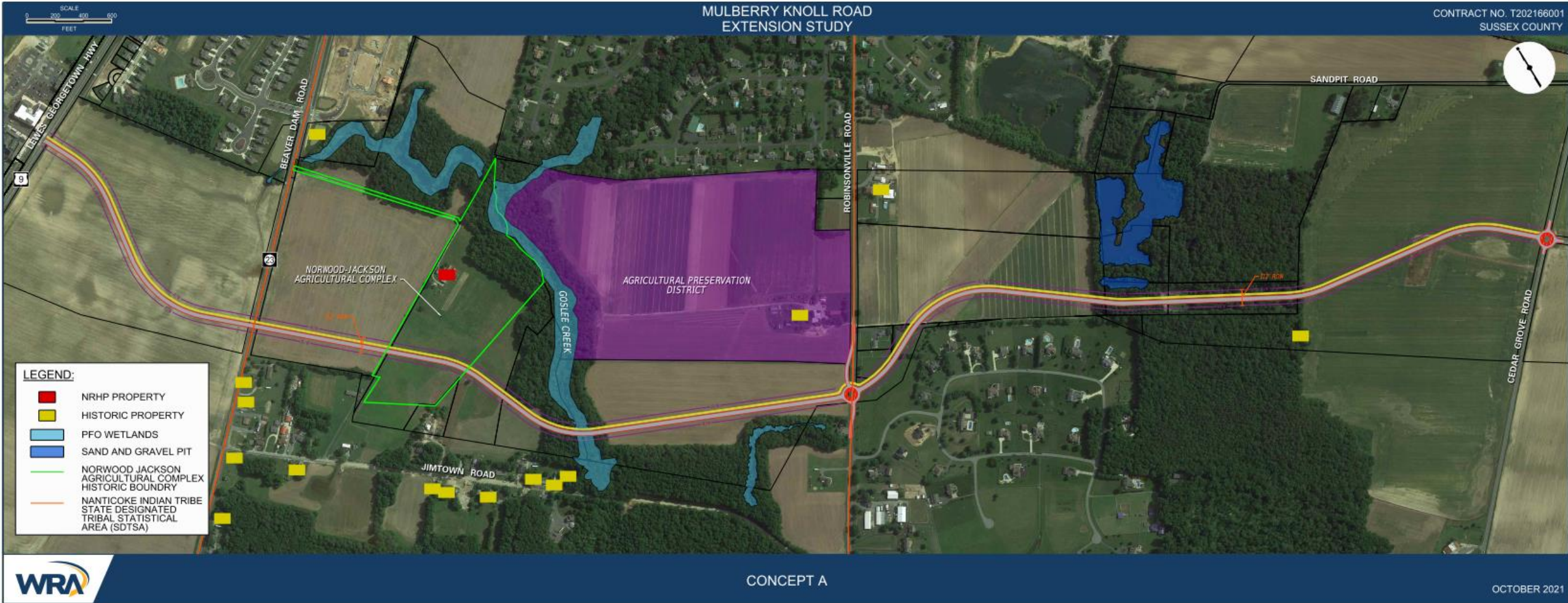


TYPICAL SECTION

- Based on AASHTO standards
- Two 11-foot lanes with 5-foot shoulders/bicycle lanes
- One 10-foot shared-use path

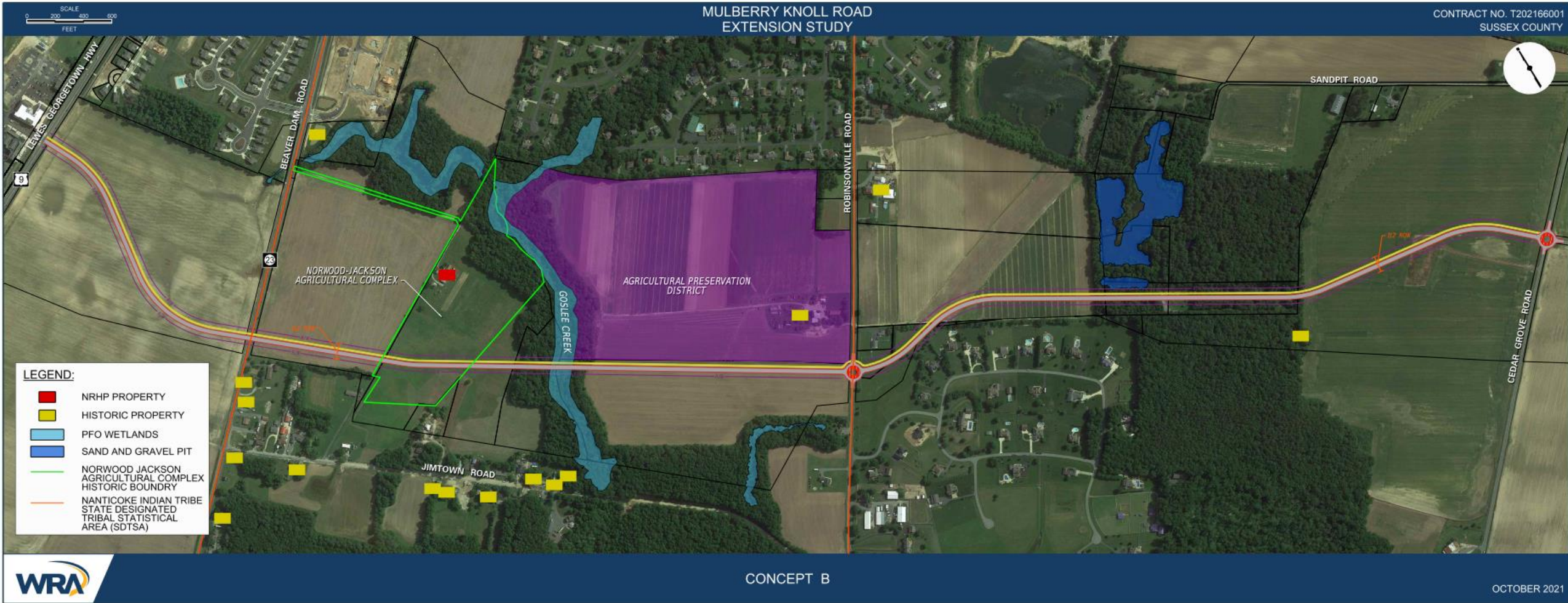


TYPICAL SECTION
MULBERRY KNOLL ROAD EXTENSION



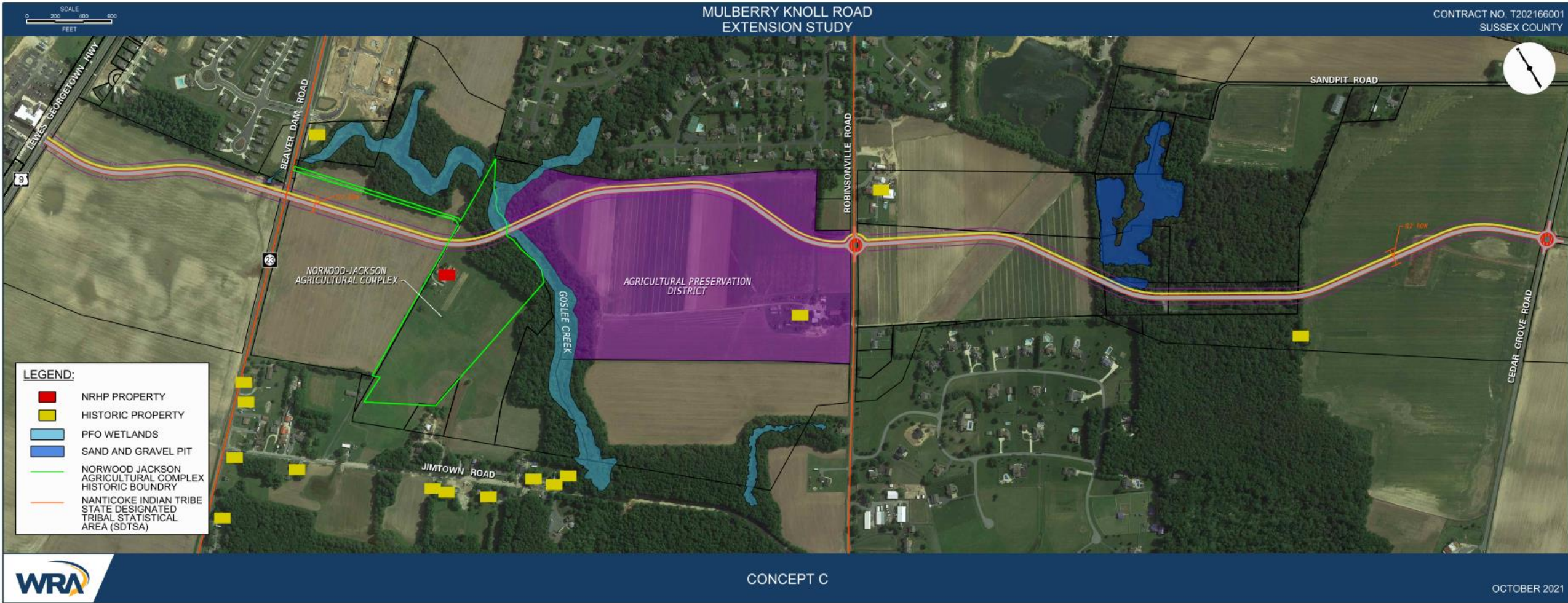


INITIAL CONCEPT B





INITIAL CONCEPT C





COMPARISON OF INITIAL CONCEPTS

Resource	Concept A	Concept B	Concept C
Length (miles)	2.24	2.19	2.16
Area (ac.)	30.2	29.6	28.4
Properties Affected (number of parcels)	17	15	12
Residential Land Use (ac.)	0.0	0.1	0.0
Relocations (number of relocations)	0	0	0
Wetlands (ac.)	0.3	0.4	0.6
Streams (LF)	120	112	118
Forest Land (ac.)	4.1	4.6	4.4
Socioeconomic and Environmental Justice Communities (Affected Census Block Groups)	0	0	0
Agricultural Land Use (ac.)	25.4	24.5	23.1
Agricultural Conservation Easement Extension (ac.)	0	0	11.0
Cultural Resources (ac. of property)	1.5 Edge of Property	1.6 Edge of property	1.1 Bisects property
Adjacent Parcels Identified for Development	8	8	7

NEXT STEPS

- Incorporate community feedback into concepts where feasible
- Identification of Recommended Concept
- PEL Study Complete – Early 2022

HOW TO SUBMIT QUESTIONS

- If you would like to submit a question, please access Q&A on bottom of page
- If you are on the phone, please press *9 to participate





THANK YOU!

- Visit the project website for more project information as well as a link to this workshop presentation. The site will be periodically updated with new information as it is available.

<https://deldot.gov/projects/Studies/mulberry-knoll/>

- Questions/comments regarding this project can also be sent via mail, email, or phone:

dotpublic@delaware.gov
(800) 652-5600
(302) 760-2080

DeIDOT Community Relations
Attn: Regional Systems Planning
P.O. Box 778
Dover, DE 19903